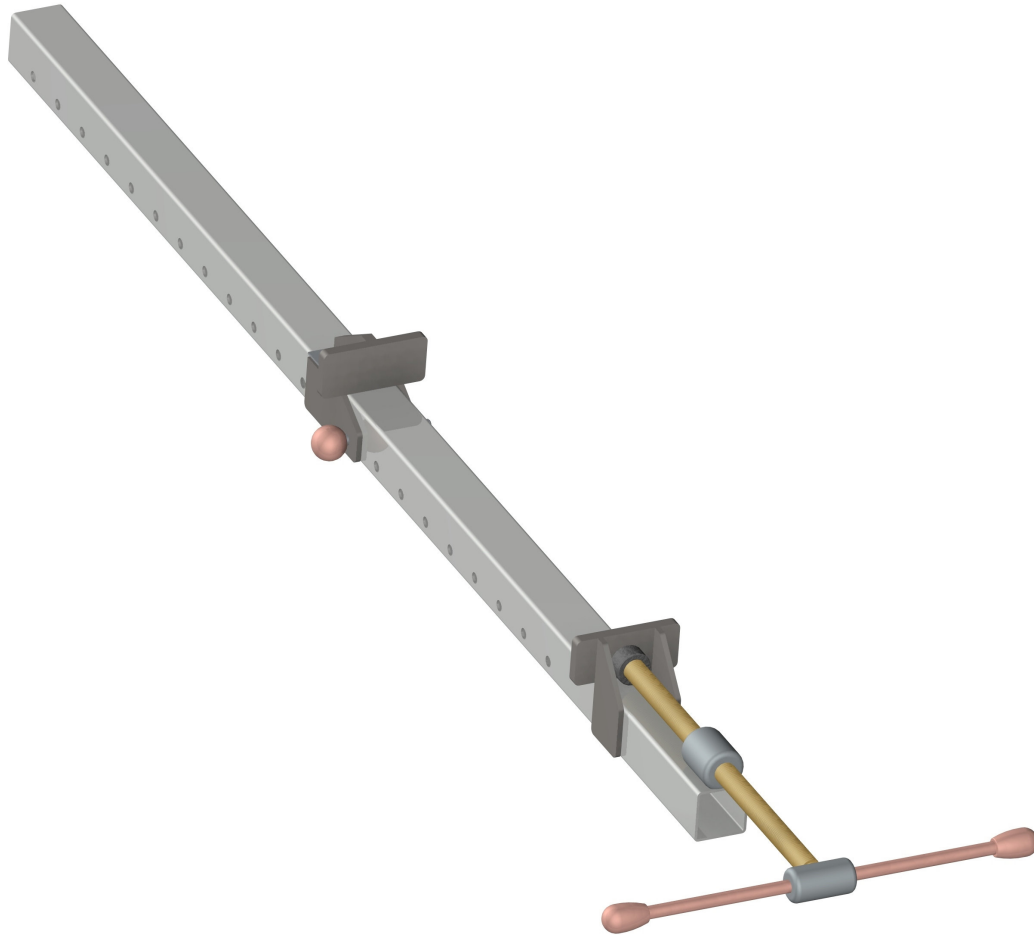


Metal Clamp

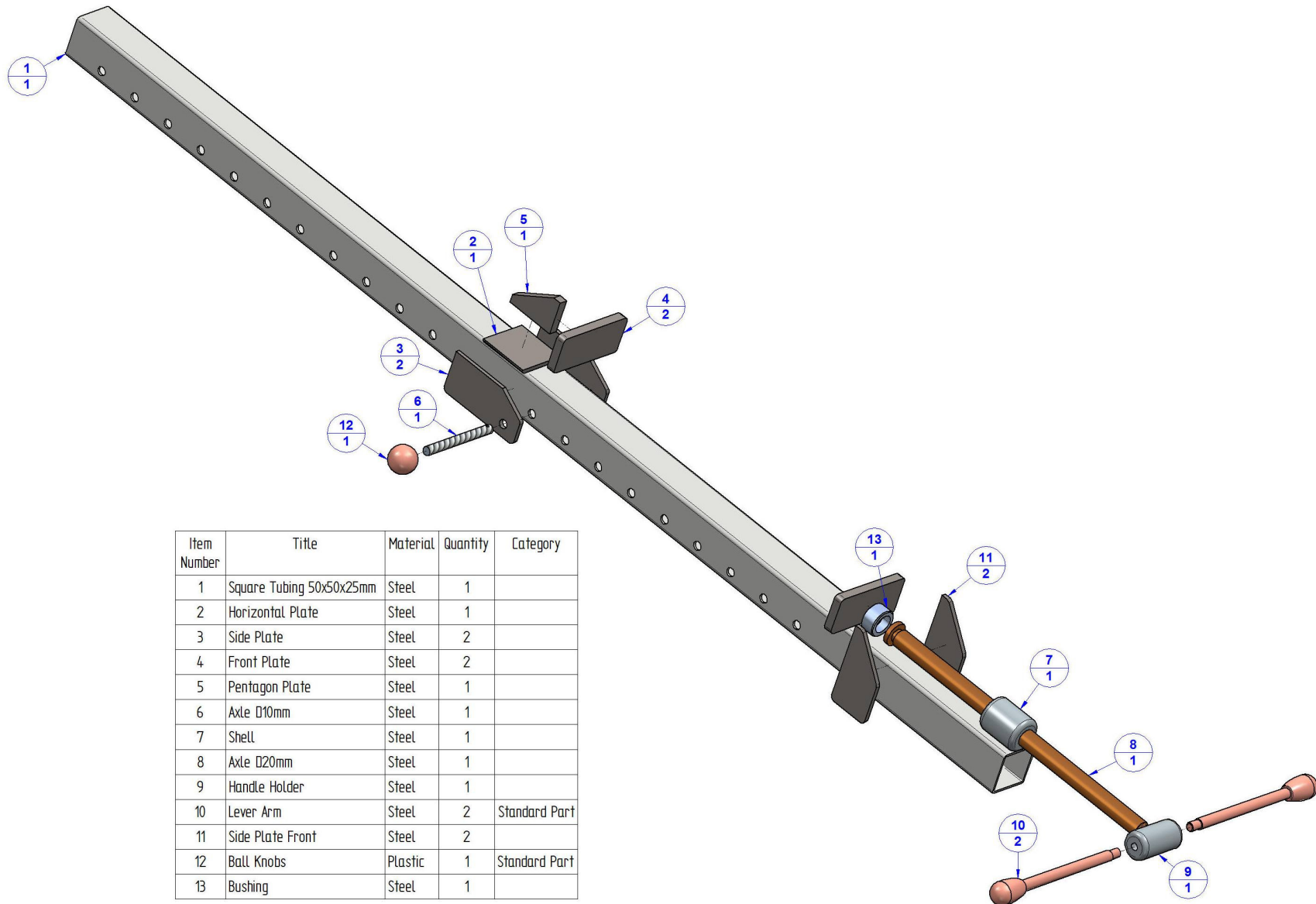


Making of this Clamp requires not much of your time and you don't need to have some special skills. All you have to do is to precisely make the items with the exact measurements as given in this 2D documentation, then join those parts together. The measurements are given in millimeters, and the measurements in inches are given in brackets (1 inch = 25, 4 mm).

Do not forget to chamfer the edges on items 1, 2, 3, 4, 5, 6, and 11. This way you will avoid injuries that can happen while working with its very sharp edges. This should become a rule when you work with metal items, which are made by cutting, milling or turning.

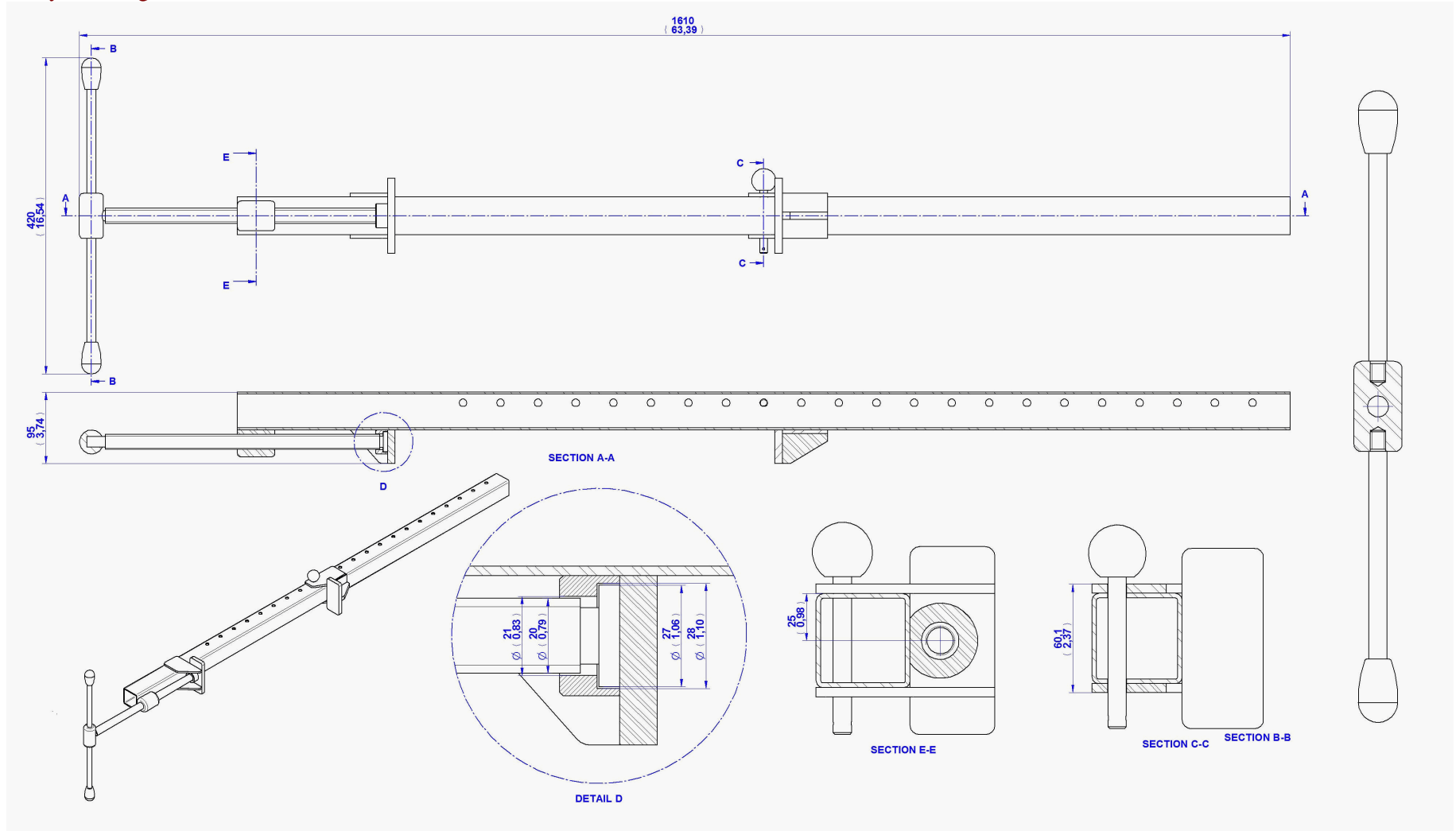
Use various tools and clamps in process of welding, so you could weld the items together with accuracy.

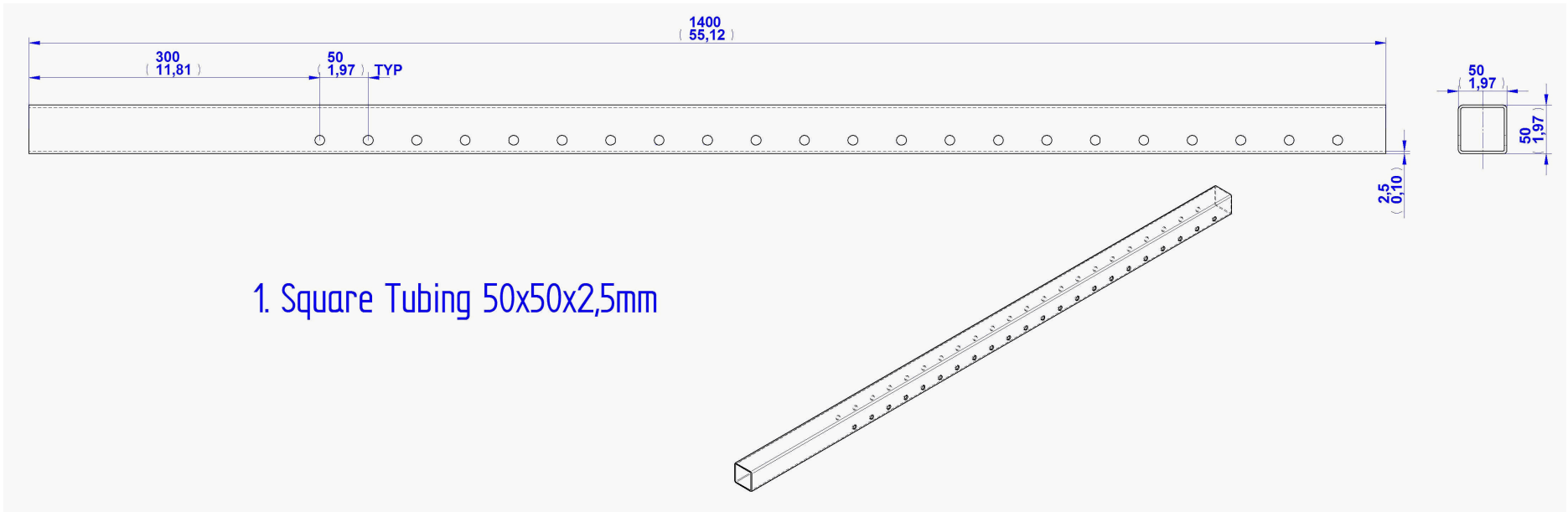
Parts List



Item Number	Title	Material	Quantity	Category
1	Square Tubing 50x50x25mm	Steel	1	
2	Horizontal Plate	Steel	1	
3	Side Plate	Steel	2	
4	Front Plate	Steel	2	
5	Pentagon Plate	Steel	1	
6	Axle D10mm	Steel	1	
7	Shell	Steel	1	
8	Axle D20mm	Steel	1	
9	Handle Holder	Steel	1	
10	Lever Arm	Steel	2	Standard Part
11	Side Plate Front	Steel	2	
12	Ball Knobs	Plastic	1	Standard Part
13	Bushing	Steel	1	

Assembly Drawing





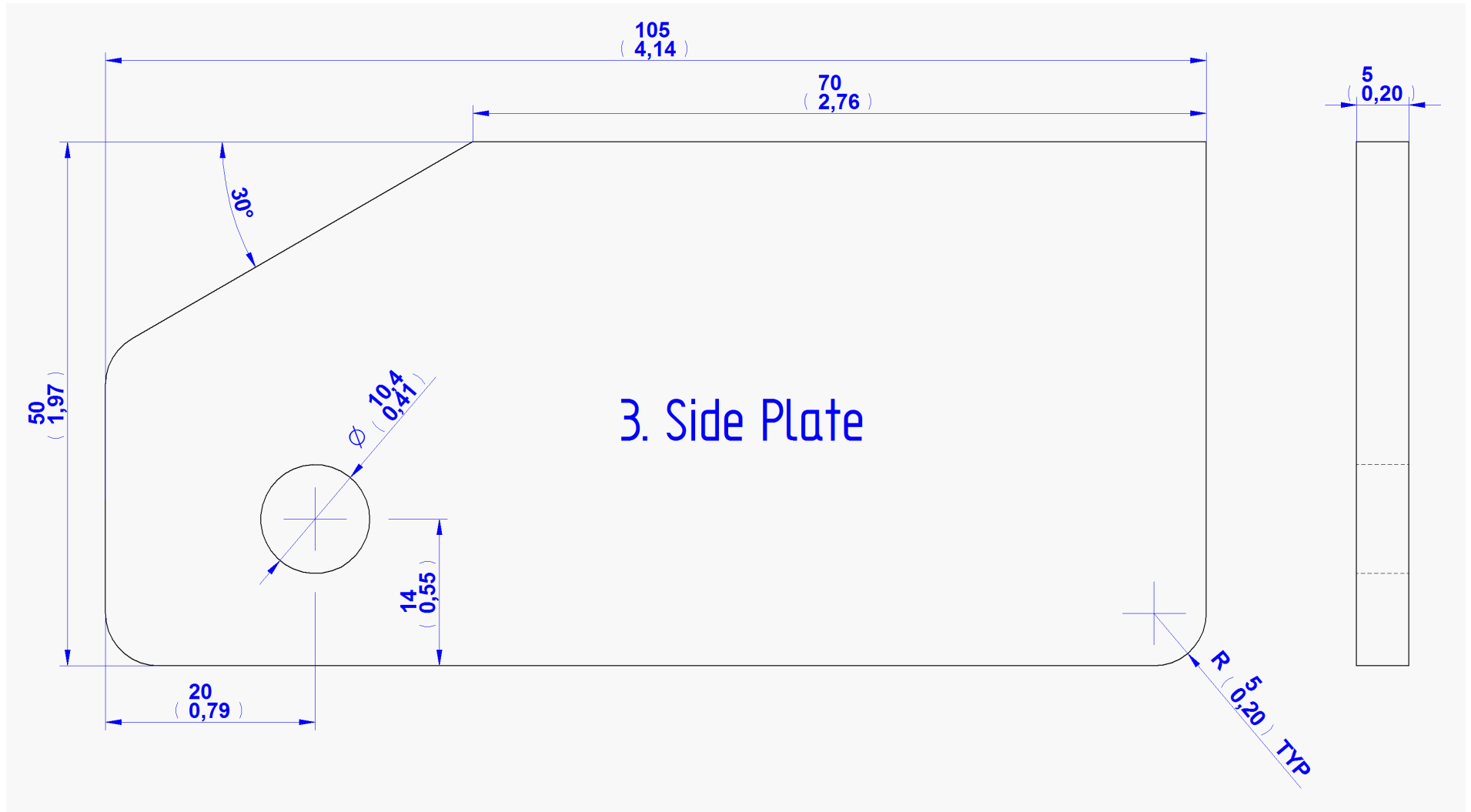
2. Horizontal Plate

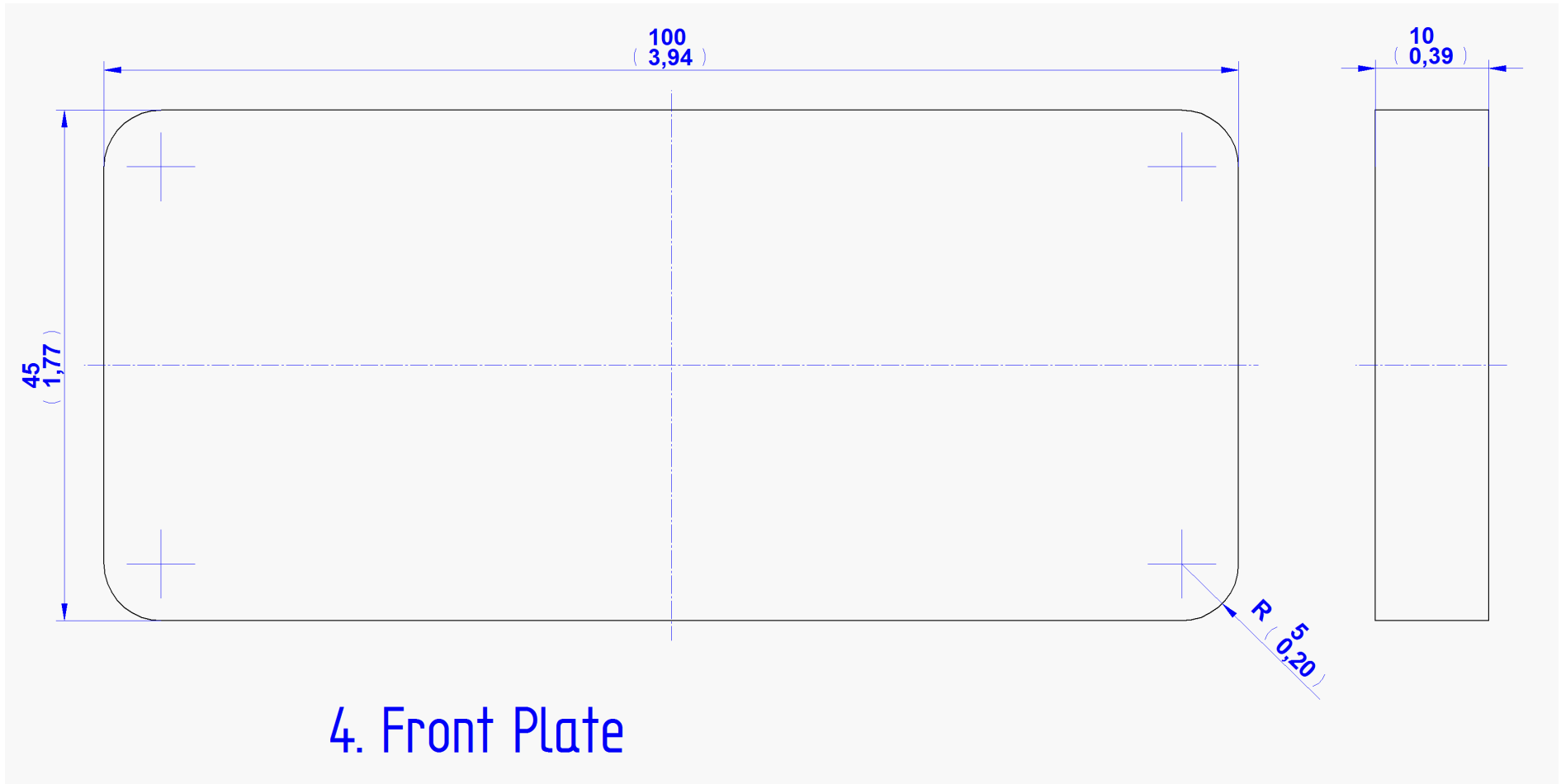
60,1
(2,37)

60
(2,36)

5
(0,20)

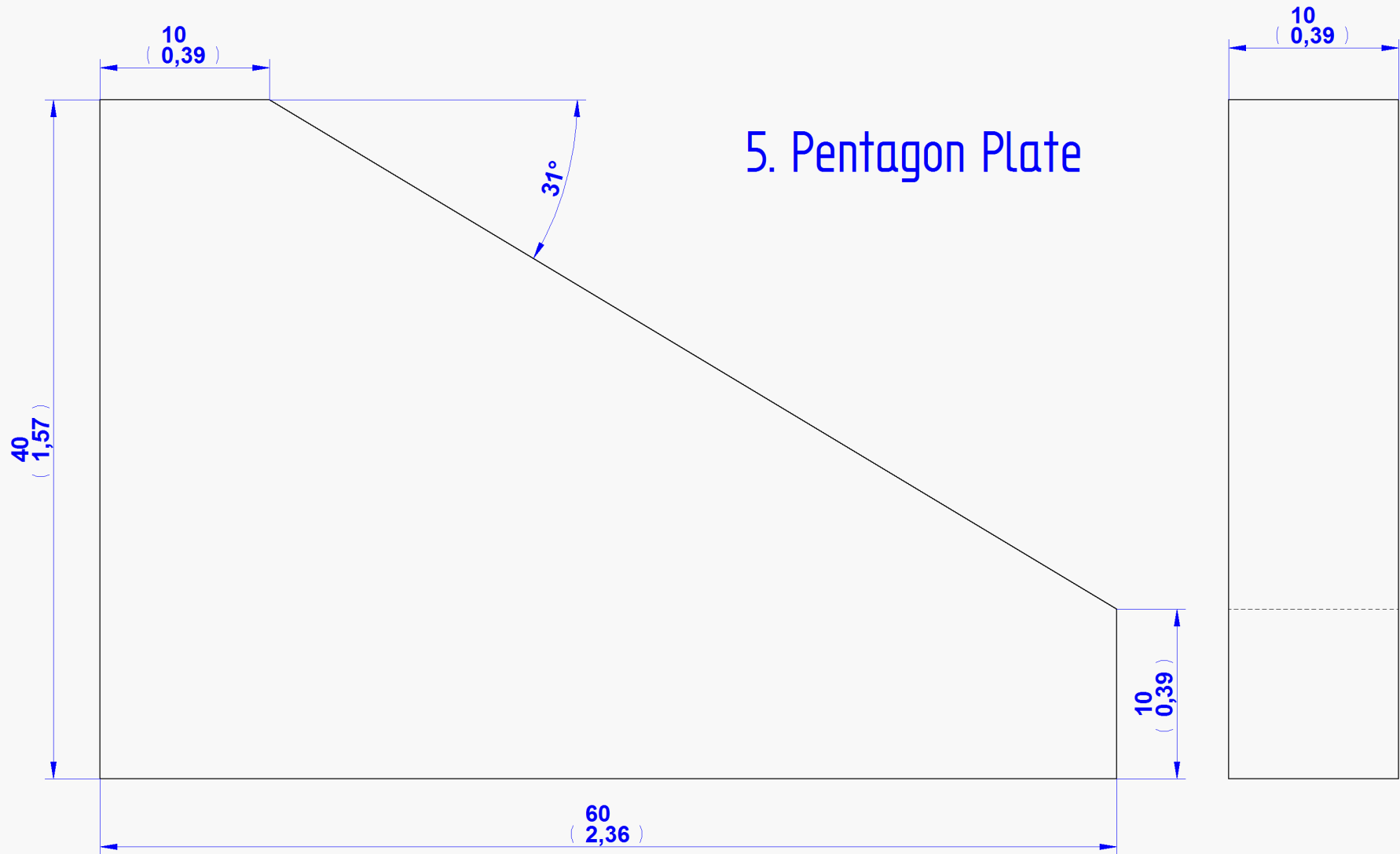
3
(0,12) X 45°

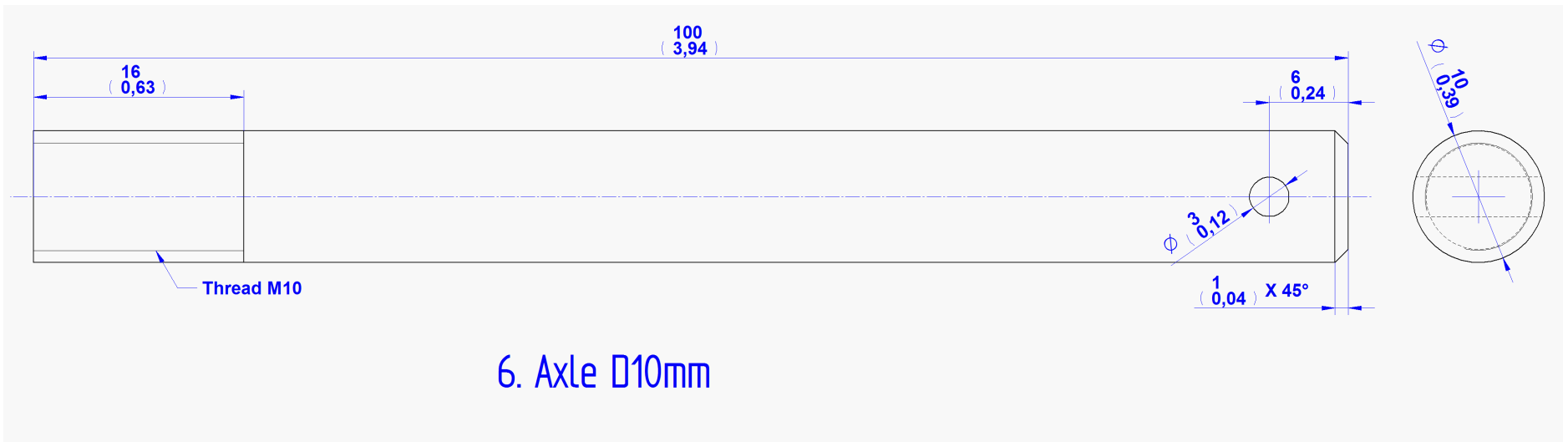




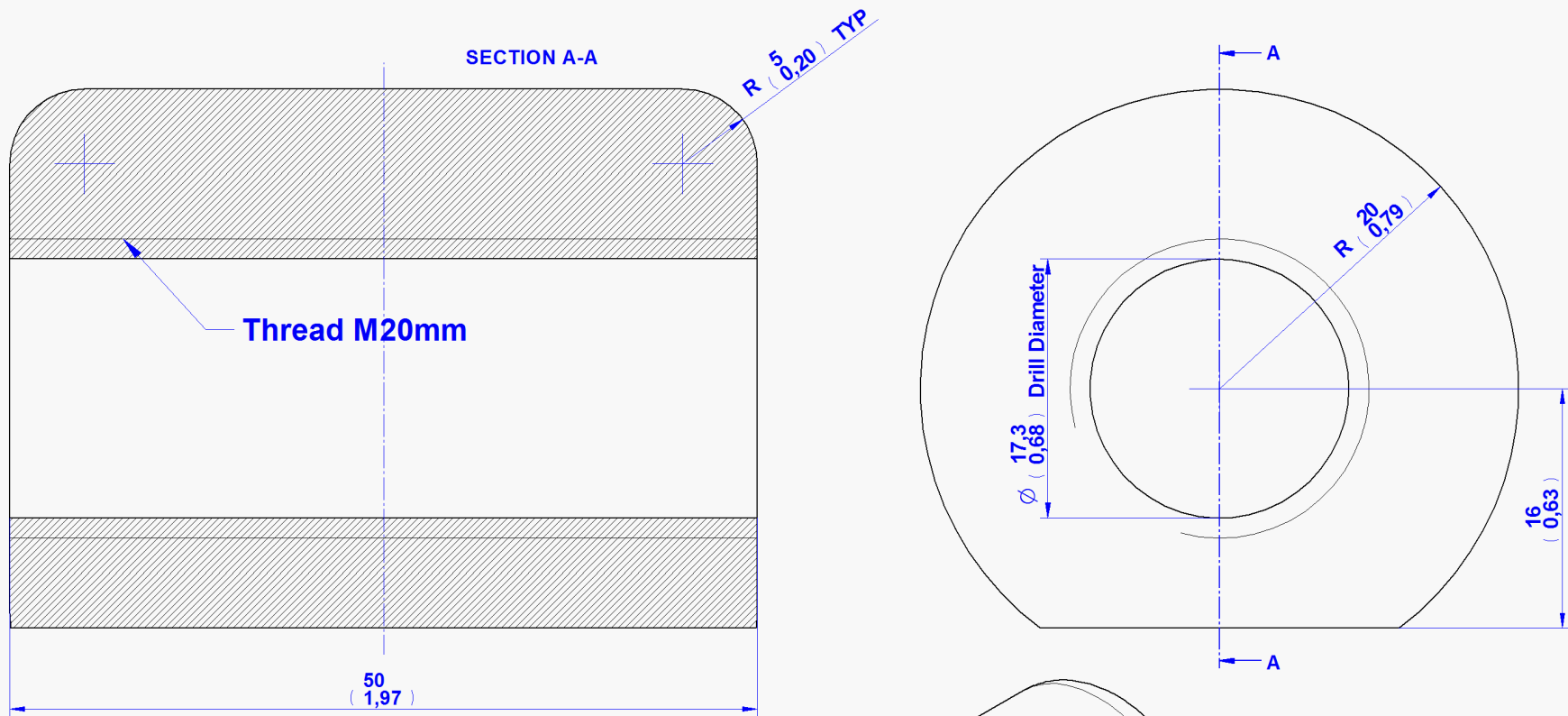
4. Front Plate

5. Pentagon Plate

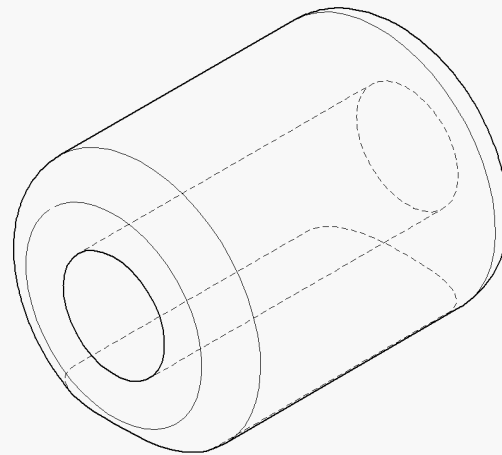


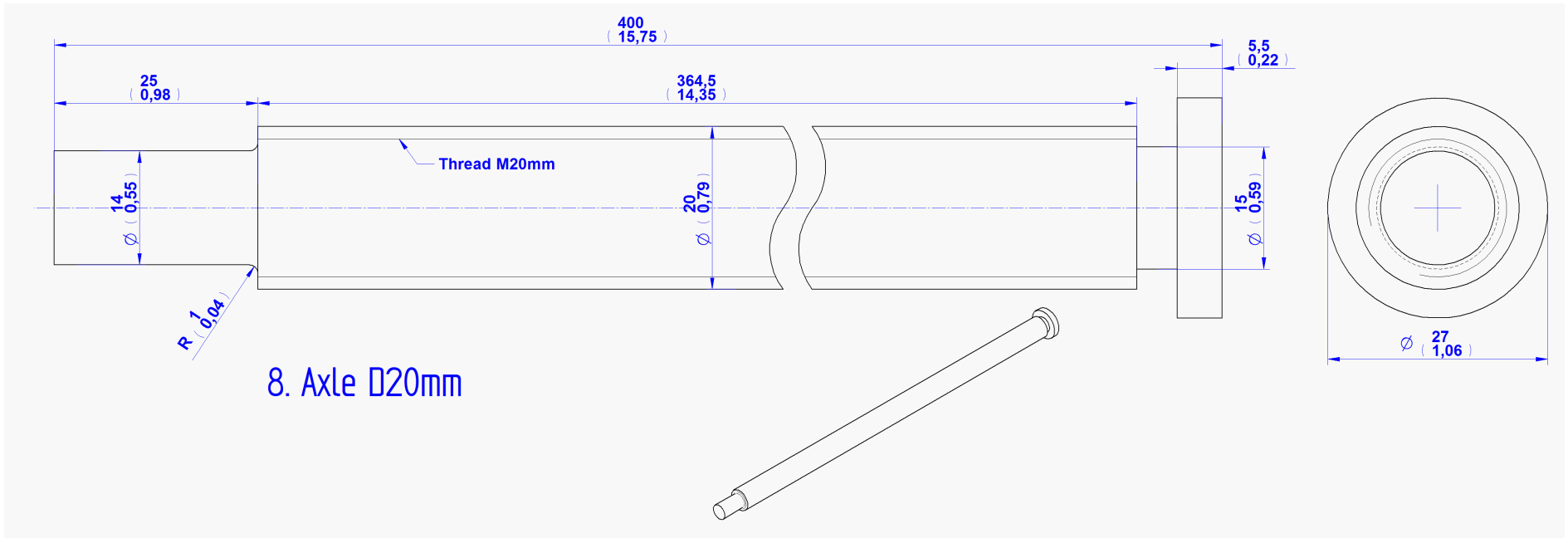


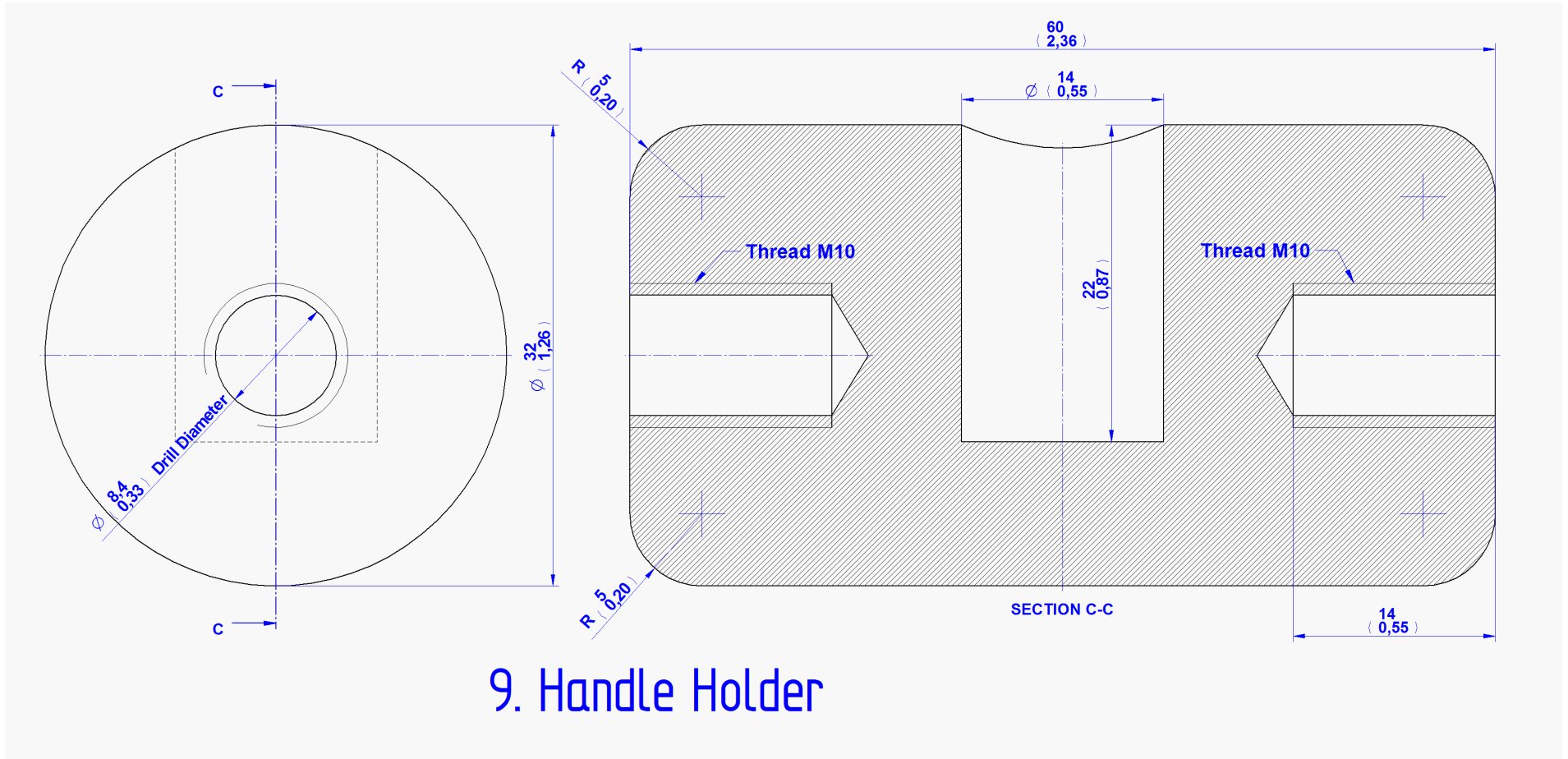
6. Axle D10mm



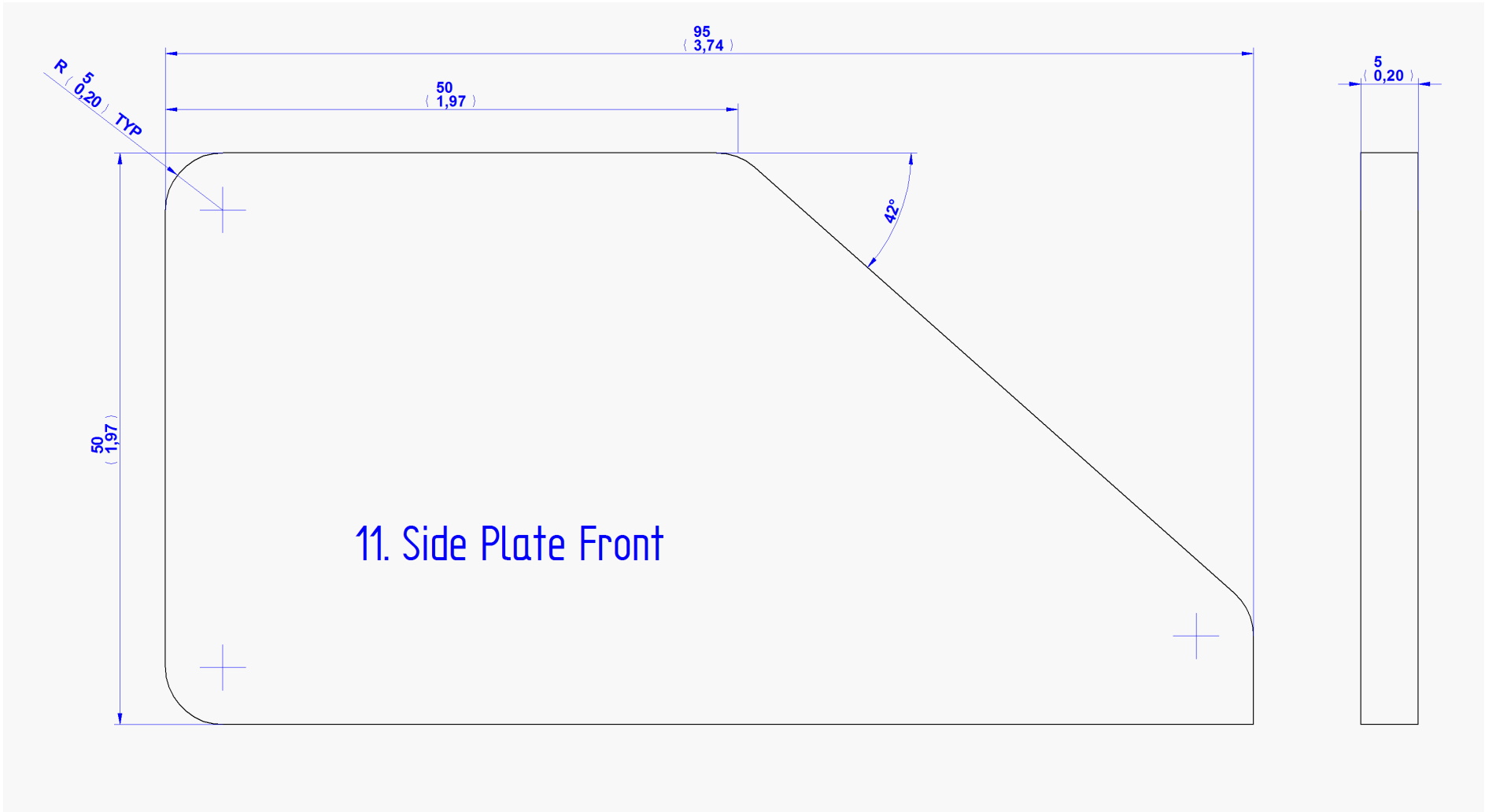
7. Shell

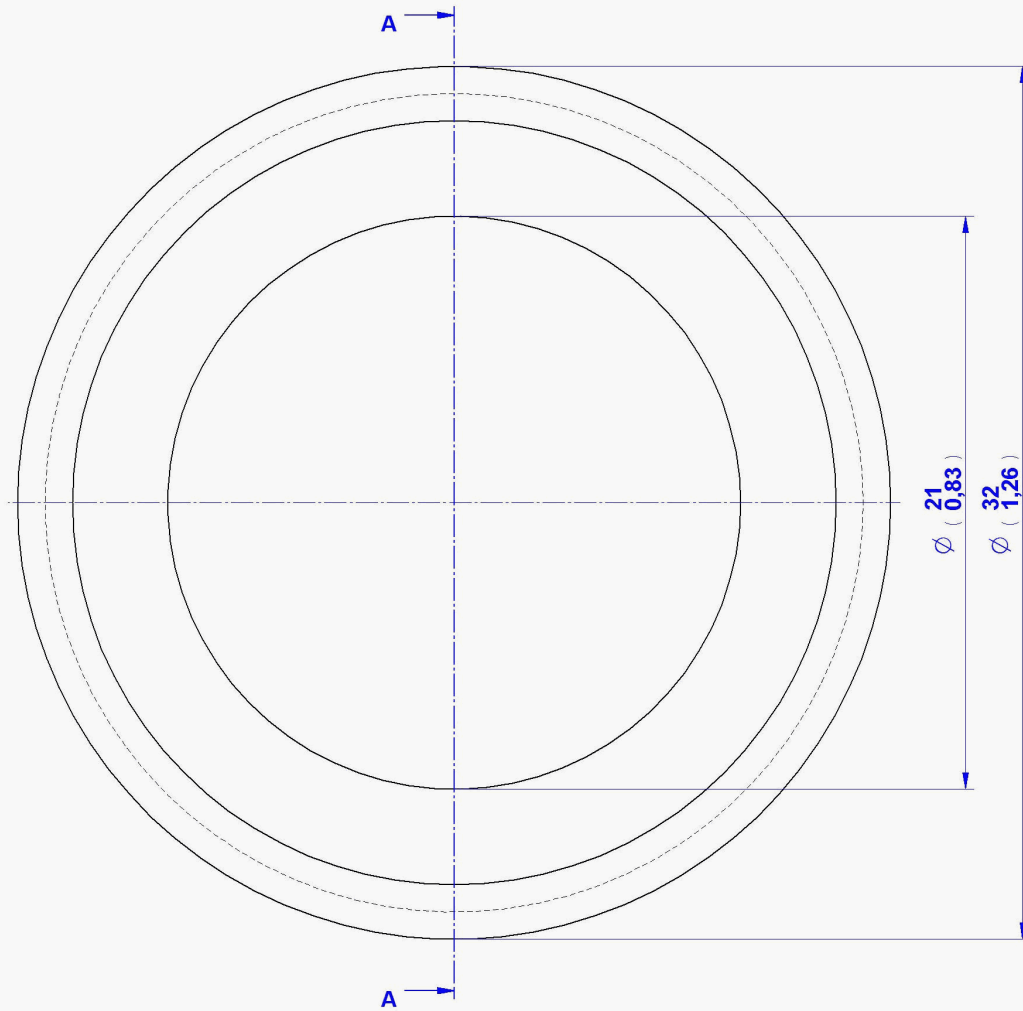




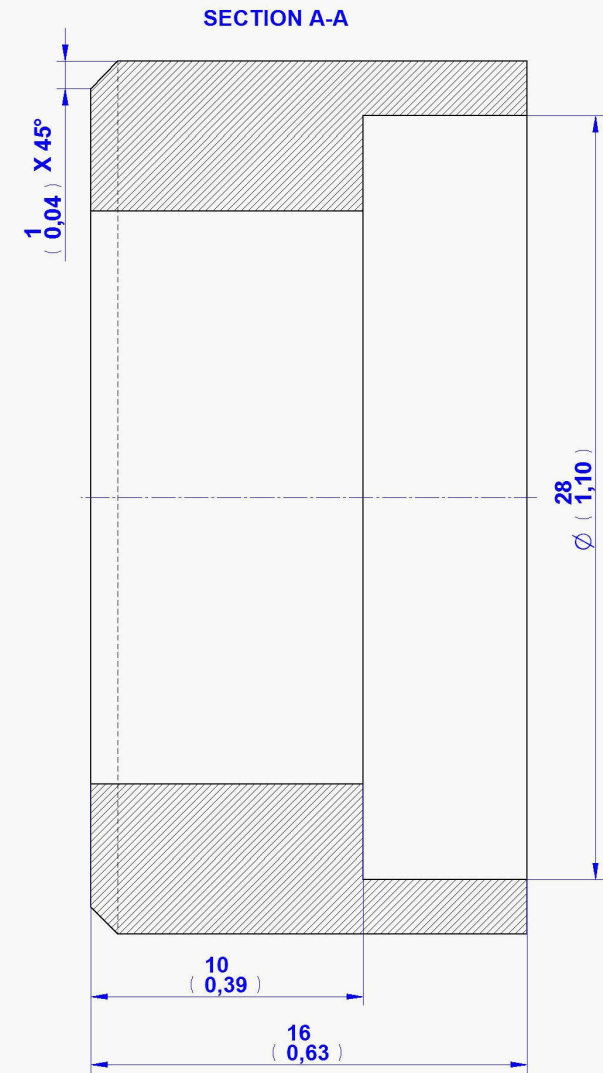


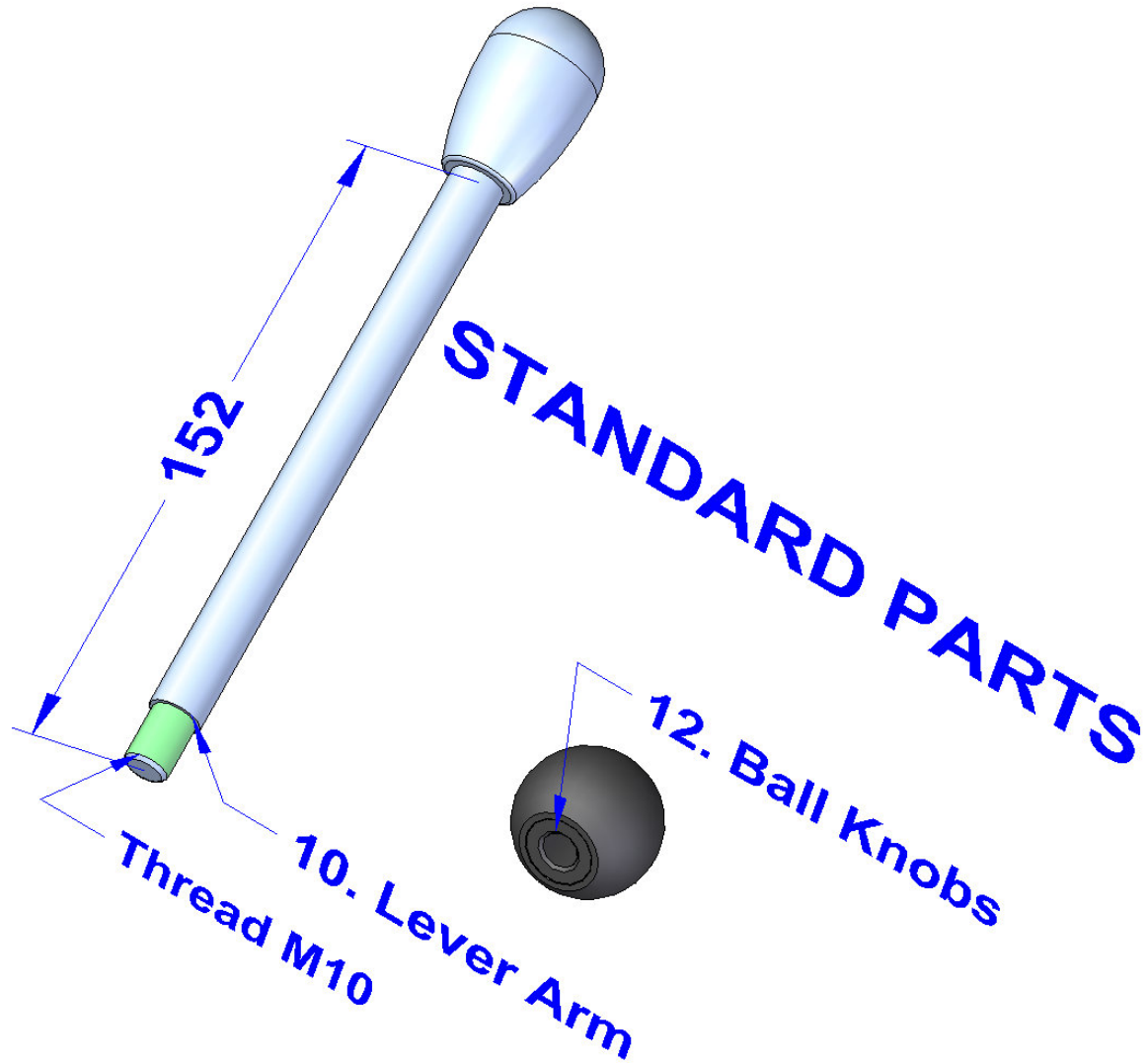
9. Handle Holder





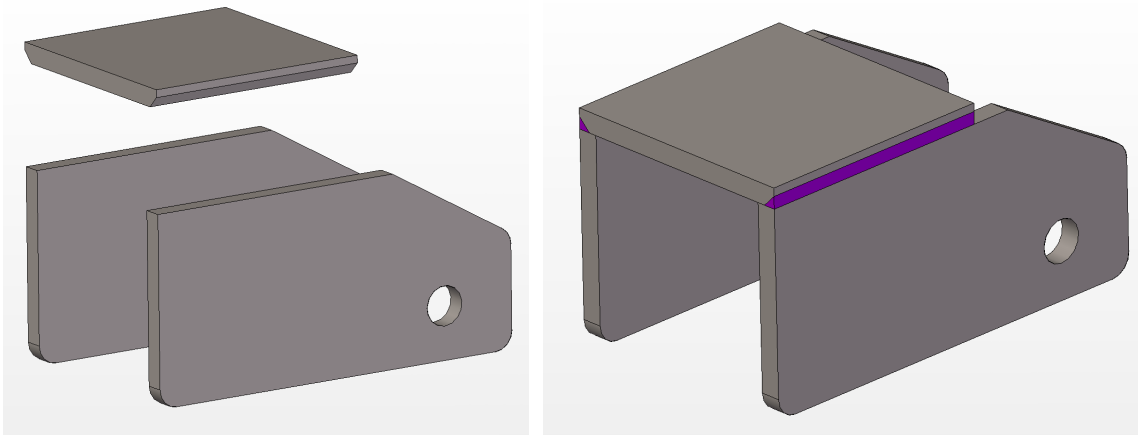
13. Bushing



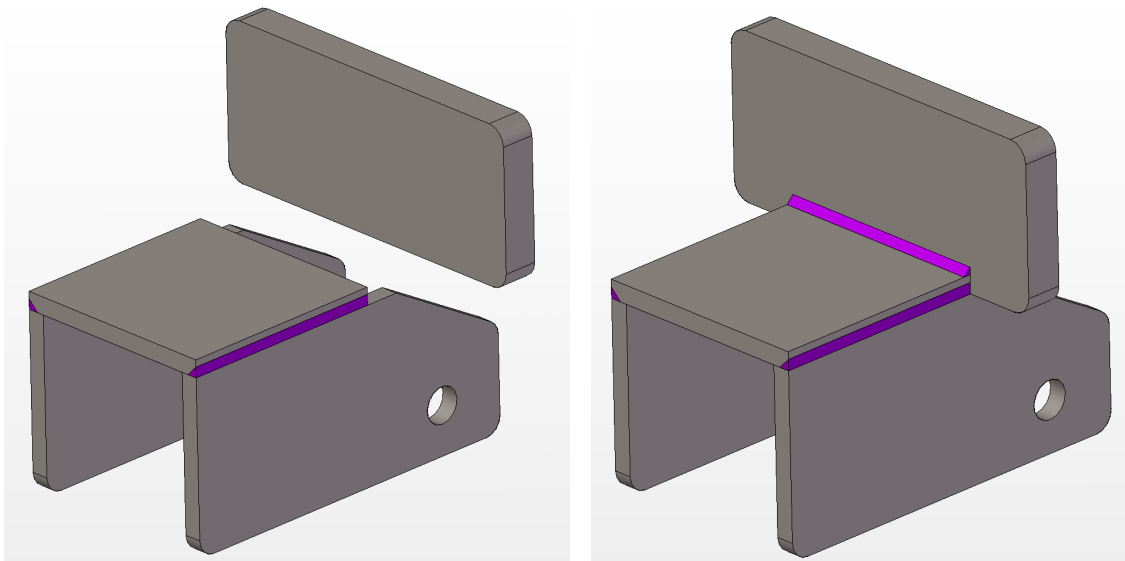


Assemblage Instructions

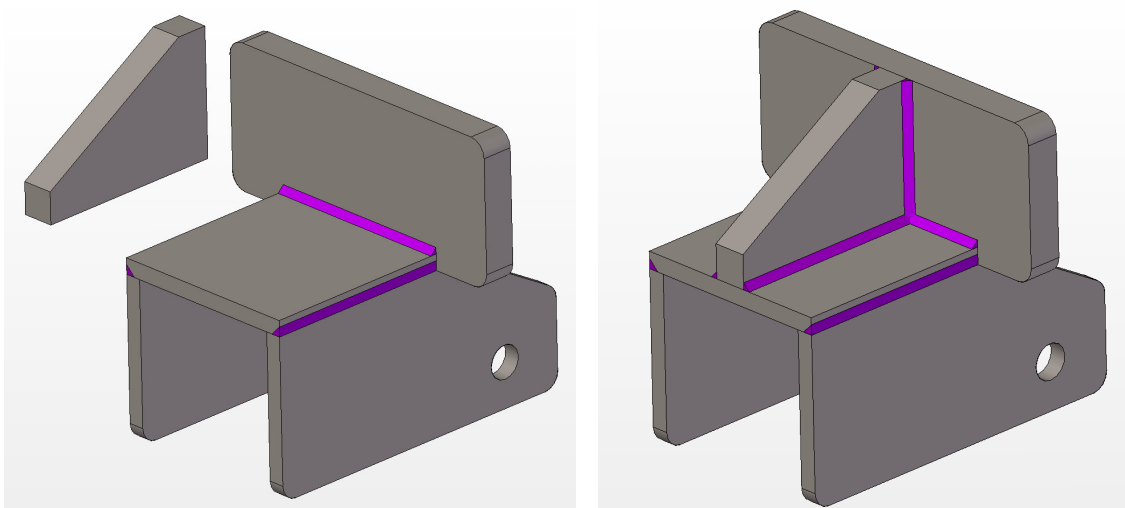
1. Weld the Horizontal Plate (item 2) to the Side Plates (items 3).



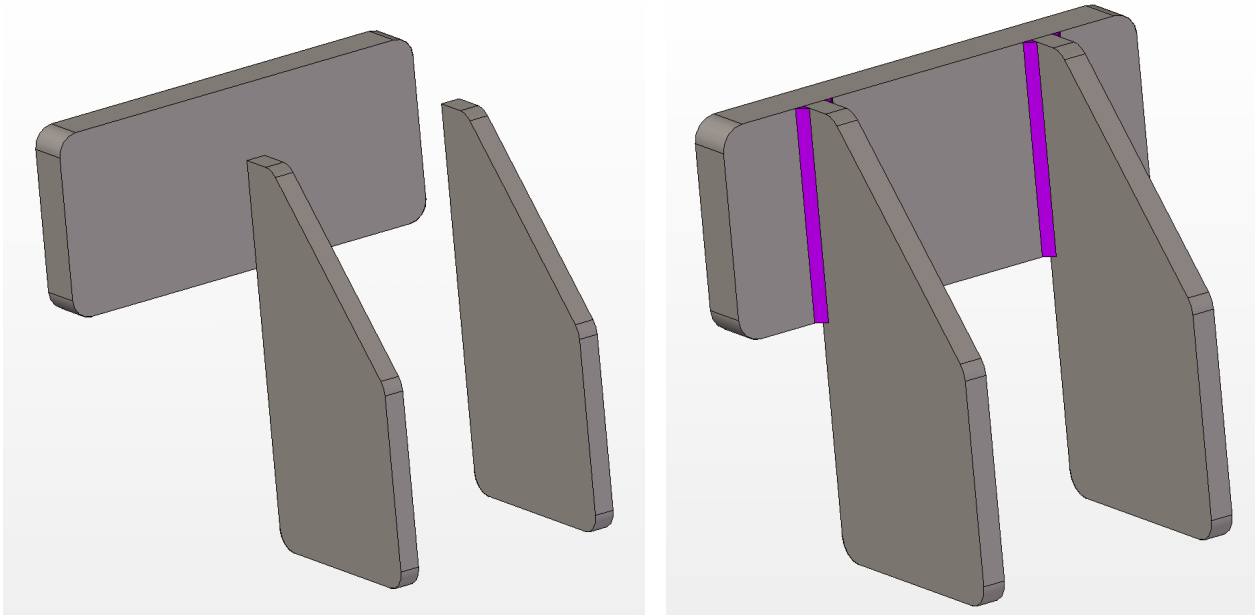
2. Weld the Front Plate (item 4) to the subassembly made in the previous step.



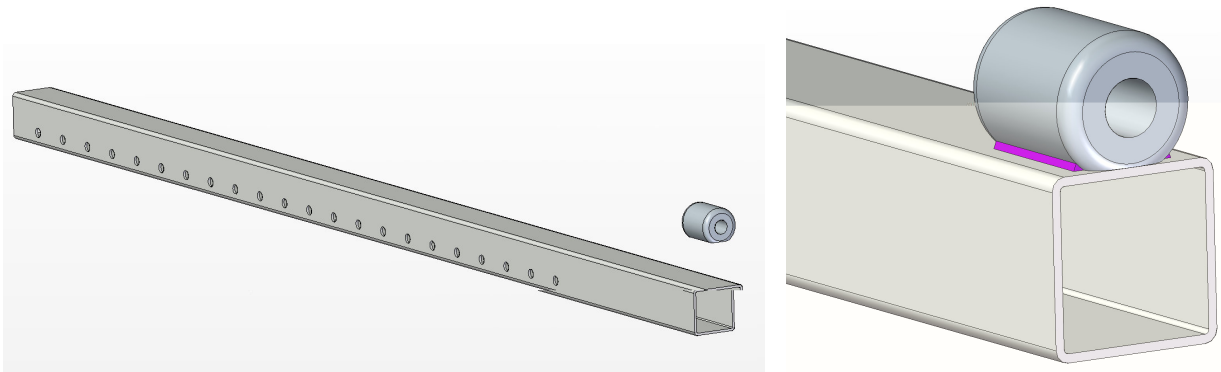
3. Weld the Pentagon Plate (item 5) to the subassembly made in the previous step.



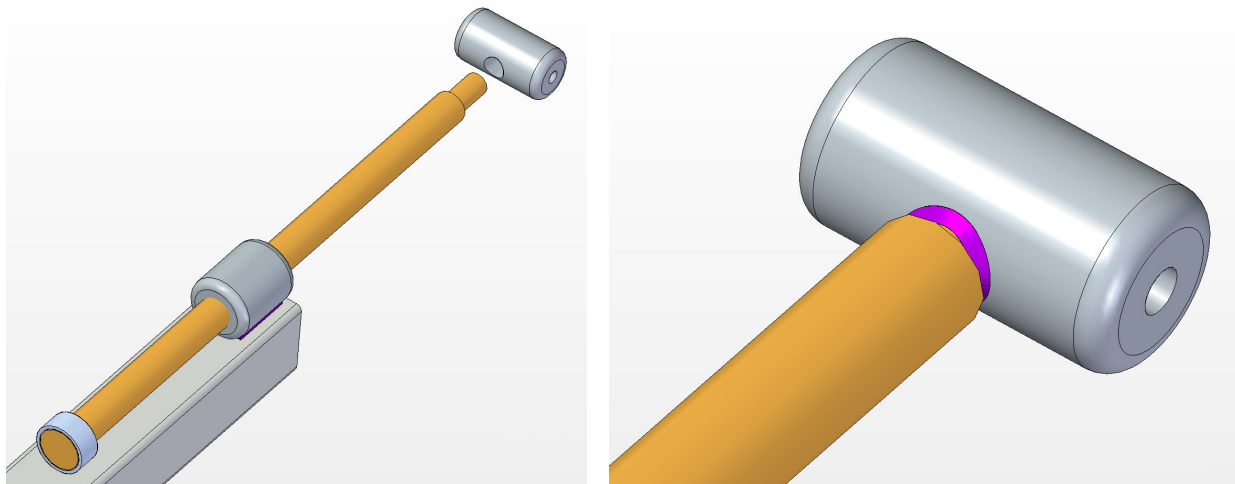
4. Weld the Front Plate (item 4) to the Side Plates Front (items 11).

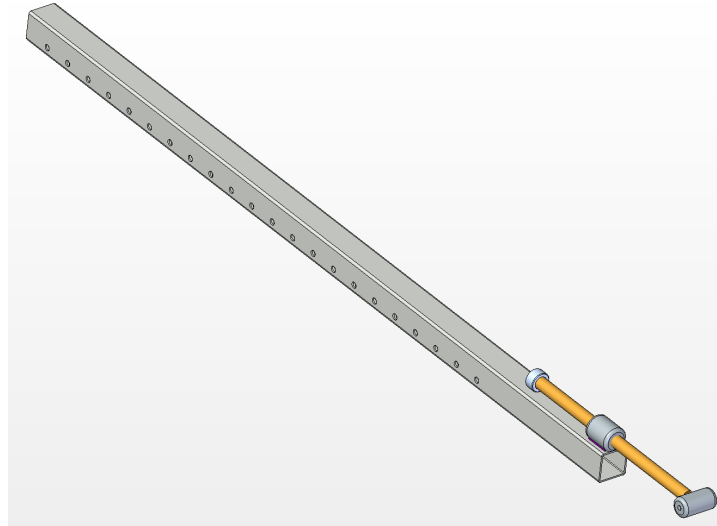


5. Weld the Shell (item 7) to the Square Tubing 50x50x2,5mm (items 1).

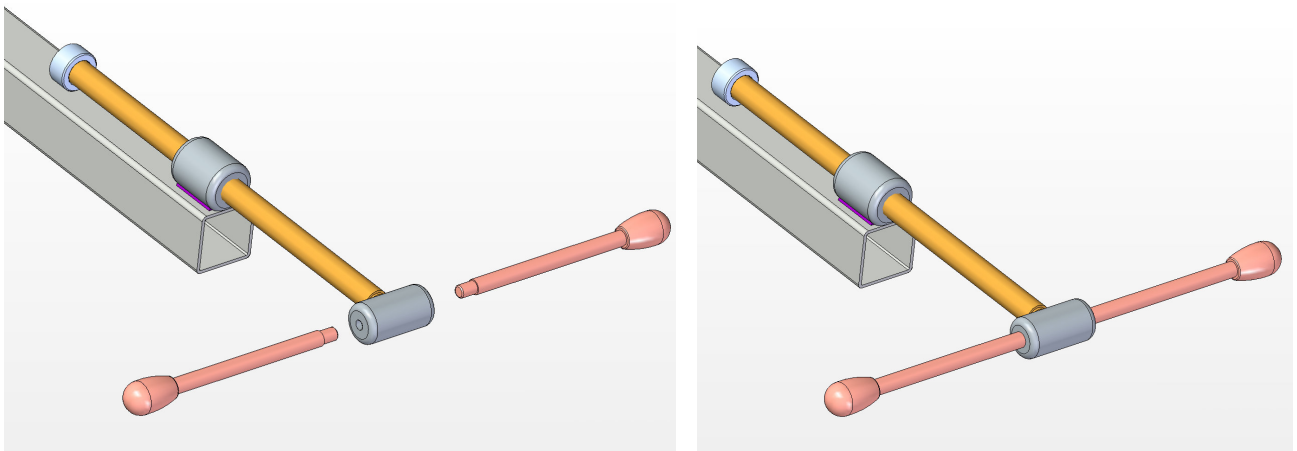


6. Set the Bushing (item 13) to the Axle D20mm (item 8) and screw them to the subassembly made in the previous step. Weld the Handle Holder (item 9) to the Axle D20 (items 8).

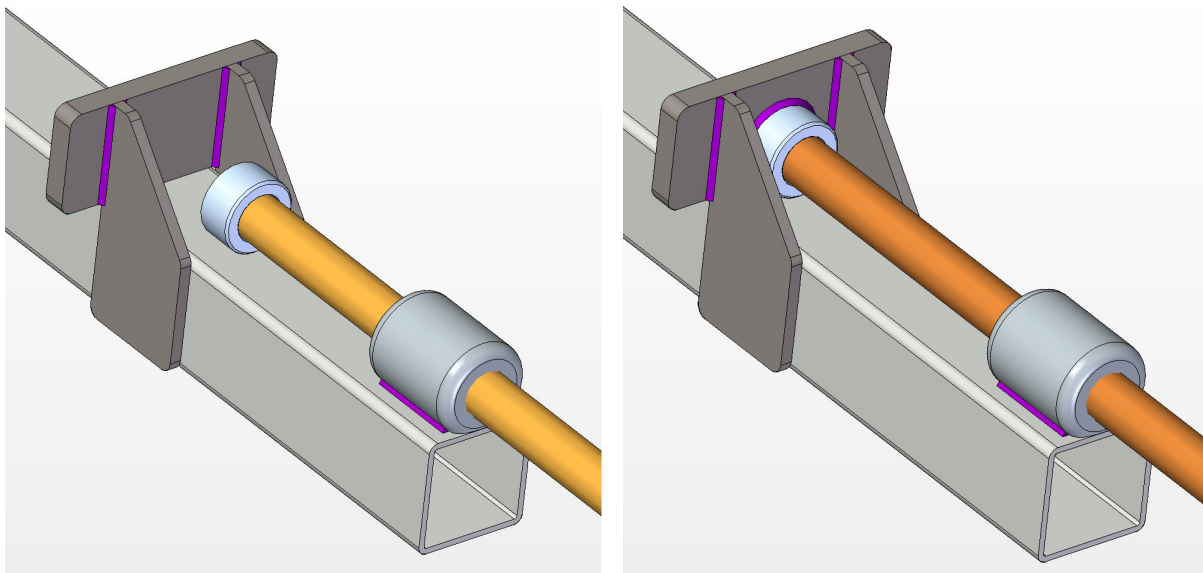


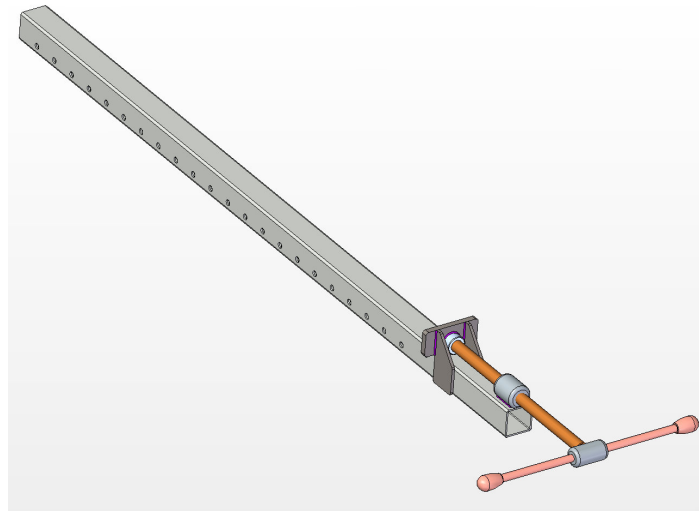


7. Screw the Lever Arm (Item 10) to the subassembly made in the previous step.



8. Weld the subassembly made in step 4 to the subassembly made in the previous step.





9. Set the subassembly made in step 3 with the Axle D10mm (item 6) and the Ball Knob (item 12) to the subassembly made in the previous step.

